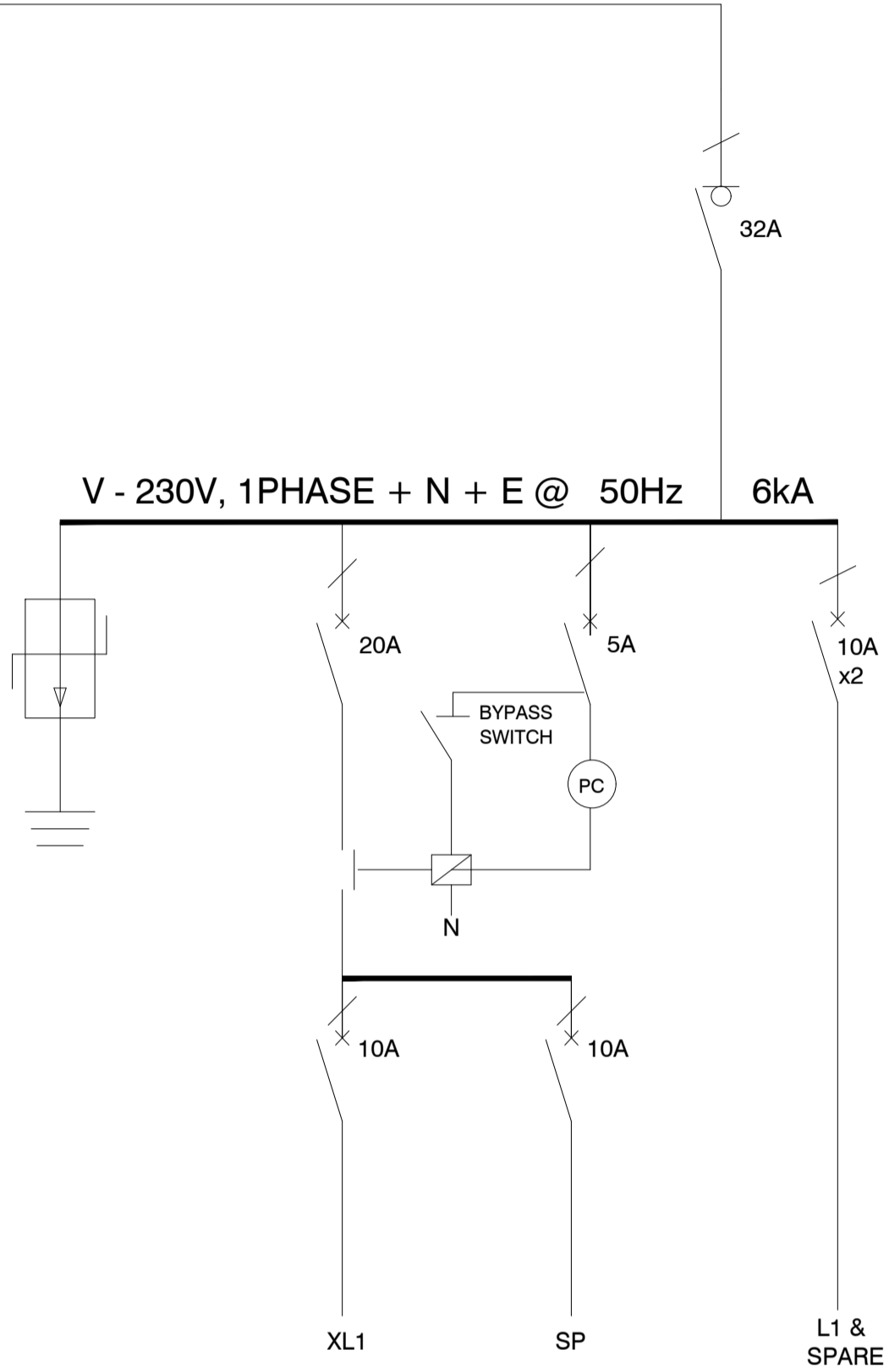


4.0mm² 2C PVC/SWA/PVC ECC Cu CABLE  
FED FROM DB -G



EXTERNAL LIGHTS (XL)
230V
50Hz
2 x 2,5mm² CONDUCTOR
± 2,5mm EARTH

INTERNAL LIGHTS (L)
230V
50Hz
2 x 2,5mm² CONDUCTOR
± 2,5mm EARTH

ADDITIONAL NOTES

- THIS DB SHALL COMPLY WITH SANS 1973/61439 AND SHALL BE DESIGNED AND MANUFACTURED BY A SPECIALIST SWITCHBOARD MANUFACTURER.
- ALL EQUIPMENT SHALL COMPLY TO THE RELEVANT SANS STANDARDS.
- CASCADING CIRCUIT BREAKERS MUST BE USED.
- THE ICU OF CIRCUIT BREAKER IS THE SAME AS FOR FEEDING BUSBAR.
- PROVIDE 20% SPARE SPACE.
- MATERIAL SHALL BE 1,6mm WHITE MILD STEEL WITH POWDER COATED EPOXY.
- NEUTRAL AND EARTH BAR MUST BE EQUAL TO PHASE BAR.
- NO MIX OF BRANDS.

BOARD INFORMATION

NAME OF DB	: DB-F
LOCATION	: ABLUTIONS
MOUNTING	: SURFACE MOUNTED
IP CLASS	: 54
CABLE ENTRY	: TOP FEEDERS AND BOTTOM FEEDERS
DOOR REQUIRED	: YES, MAIN BREAKER TO PRO-TRUDE
COLOUR DB PLATE	: WHITE

LEGEND

	3 POLE CIRCUIT BREAKER
	1 POLE CIRCUIT BREAKER
	3 POLE ISOLATOR
	1 POLE ISOLATOR
	EARTHING
	1/ 3 PHASE CONTACTOR
	PHOTO ELECTRIC CELL
	kwh- POWER MASTER METER AS PER SPECIFICATION
	SURGE ARRESTER
	2 POLE (L+N) EARTH LEAKAGE UNIT

NOTES:

REFERENCE DRAWING

NO.	DRAWING NUMBER	DESCRIPTION
1	3007	DB-D & DB-E SINGLE LINE DIAGRAM
2	3011	RETICULATION LAYOUT

REVISION

NO.	DATE	REVISION	REV. BY

NO.	DATE	ISSUED FOR TENDER	L. MKHIZE
1	15/12/2022	ISSUED FOR TENDER	L. MKHIZE

CLIENT DEPARTMENT SIGNATURES

FACILITY STAMP

FACILITY MANAGER

INFRASTRUCTURE MANAGER

GENERAL MANAGER

Checked by Professional Consultant  
Name

Signature Date

**SIGPRO**  
ENGINEERING AND PROJECT MANAGEMENT



NORTHERN REGION

Project:  
**KZN DOE INFRASTRUCTURE DEVELOPMENT AND MAINTENANCE PROGRAMME**

Drawing Description:  
**DLAMVUZO HIGH SCHOOL  
DB-F ABLUTIONS  
SINGLE LINE DIAGRAM**

Drawn: SIGPRO Date: 02/10/2022

Scale/s:  
**N.T.S (A1)**

Consultant Drawing Number:  
**1013-017-3008**

DBSA Drawing number  
**500121952**

Stamped by Plans Approval Committee